

DELL AND TERAMEDICA® TRANSFORM HEALTHCARE TECHNOLOGY

CONTROL INFORMATION AND COSTS WITH EVERCORE® SOFTWARE

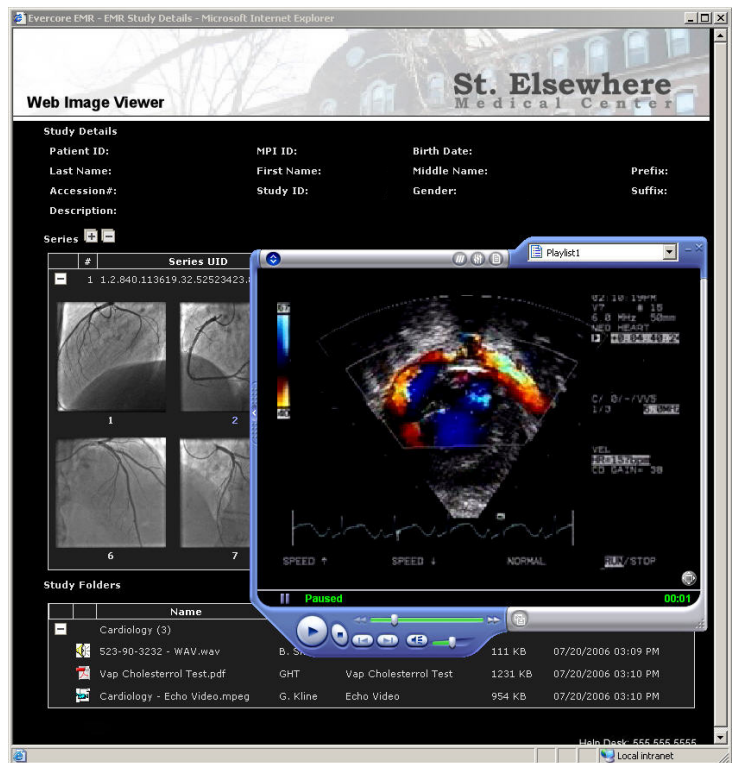
The Evercore® Clinical Information Manager (CIM) is a new technology from Dell and TeraMedica® that serves as a central repository for clinical information, including radiological images and electronic medical records (EMRs). Physicians can access this information anytime, from virtually any location. The system can make it easier for them to deliver high-quality care to their patients, and help keep costs down.

KEY FEATURES INCLUDE:

- Extremely scalable patient-centric database
- Vendor agnostic solution
- Univision™ image enables enterprise EMRs
- Massive parallel application services across enterprise server configurations
- Multimedia N-tier storage configurations (disk, optical, tape)
- Intelligent SmartStore™ Rules Engine creates storage and distribution protocols
- Evercore® Liberator eliminates data migration

PARTNERING WITH DELL TO ENHANCE PATIENT CARE

TeraMedica® chose to work with Dell to benefit from Dell's exceptional standards-based technology, multiple financing options and robust support services. The Evercore Clinical Information Manager is a comprehensive solution that is easy to deploy, operate and maintain. It utilizes Dell PowerEdge™ servers, for maximum efficiency.



"This product enhances patient care by giving physicians and healthcare providers easy access to a holistic snapshot of the patient while providing economies of scale that chief information officers and, just as importantly, chief financial officers will love."

Jim Prekop
CEO, TeraMedica

TeraMedica™
Healthcare Technology

TO LEARN MORE, CONTACT YOUR DEDICATED DELL REP
AT 866-210-4830 OR VISIT DELL.COM/Healthcare

THE RIGHT BUNDLE FOR YOUR FACILITY'S PACS NEEDS

Depending on the number of PACS exams done at your facility, we recommend different bundles of Dell software, hardware and peripherals:

SMALL 50K PACS exams/yr	MEDIUM 125K PACS exams/yr	LARGE 250K PACS exams/yr	EXTRA LARGE 500K PACS exams/yr
PowerEdge™ 2950 Evercore Application/ Database Server	PowerEdge™ 2950 Evercore Application Server	Two PowerEdge™ 2950 Evercore Application Servers	Two PowerEdge™ 2950 Evercore Application Servers
DELL/EMC CX3-10 Storage	DELL/EMC CX3-20 Storage	DELL/EMC CX3-40 Storage	DELL/EMC CX3-80 Storage
	PowerEdge™ 2950 Database Server	Two PowerEdge™ 2950 Database Servers	Two PowerEdge™ 2950 Database Servers
	PowerEdge™ 1950 Server	PowerEdge™ 1950 Server	PowerEdge™ 1950 Server
	ML6020 Tape Library 2 LT04 drives, 36 slots	ML6020 Tape Library 4 LT04 drives, 82 slots	ML6020 Tape Library 6 LT04 drives, 128 slots
	ARCHIVE: 2 node expandable EMC® Centera® with 750G HDs	ARCHIVE: 4 node expandable EMC® Centera® with 750G HDs	ARCHIVE: 4 node expandable EMC® Centera® with 750G HDs
		Two F5 3400 load balancing switches	Two F5 3400 load balancing switches
		Two Brocade® 200E 12 ports active	Two Brocade® 5000 12 ports active

Evercore can handle a large amount of your hospital's data. It's highly efficient and cost effective, giving you more control over your information and saving you time. For key decision-makers like you, it's just another way that Dell helps you simplify IT.



**TO LEARN MORE, CONTACT YOUR DEDICATED DELL REP
AT 866-210-4830 OR VISIT DELL.COM/Healthcare**

IMPORTANT NOTICE: The Dell products in this brochure are not medical devices and are not listed under UL60601. As a result, they must not be used within 6 feet of a patient or allowed to directly contact a patient. Products in this brochure not made by Dell are not listed under UL60601 unless otherwise stated by the third-party manufacturer. For more information, please visit www.dell.com/healthcare/certification.

Dell cannot be held responsible for errors in typography, photography or omissions. **TRADEMARKS:** Dell and the Dell logo are trademarks of Dell Inc. The TeraMedica® logo and Evercore are trademarks or registered trademarks of TeraMedica® Inc. Dell Inc. disclaims any proprietary interest in trademarks and names other than its own. © 2007 Dell Inc. One Dell Way, Round Rock, TX 78682. All rights reserved.